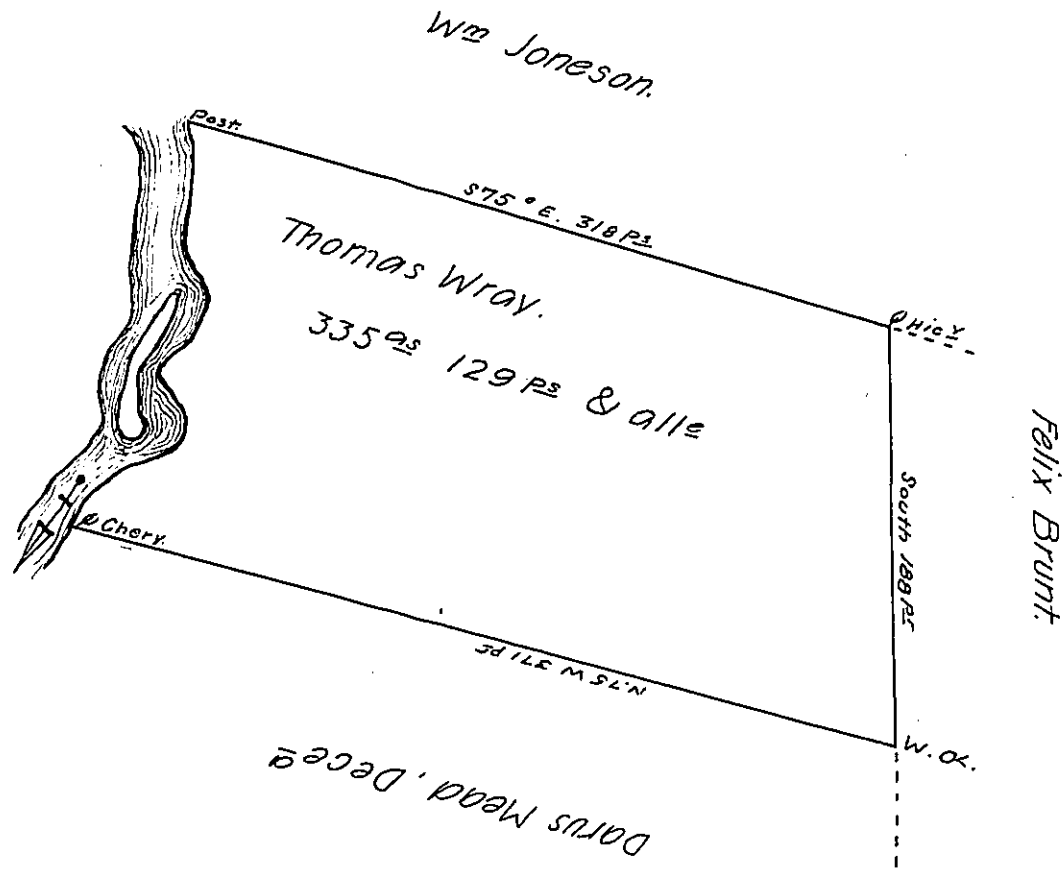


River Courses.

- N. 36° E. 9.
- N. 34° E 15
- N. 38° E 8
- N. 74° E 23.
- N. 7½° E 15.
- N. 26 W 20.
- N. 40½° E 25.
- N. 27° E 10.
- N. 17 W. 25
- N. 2 W. 16.
- N. 5° E 24.
- N. 12° E 5
- 201 P^s



Situate on the East Side of French Creek in Alle^y County. Containing 335^{as} 129 P^s and Allowance of Six p^c Cent for Roads &c. Surveyed the 17th Day of May 1794 In pursuance of his improvement Dated the 3^d day of Ap^l, 1792.

W^m Power, Dy^s.

To Dan^l Brodhead, Esquire,
Surveyor General.

IN TESTIMONY that the above is a copy of the original remaining on file in the Department of Internal Affairs of Pennsylvania, made conformably to an Act of Assembly approved the 16th day of February, 1833, I have hereunto set my Hand and caused the Seal of said Department to be affixed at Harrisburg, this.....seventeenth.....day of.....September.....1906.

Isaac P. Brown
Secretary of Internal Affairs.